

Load Short Form
Entire House
CASTLE ROCK HOMES

Job: **PARK PLACE**
 Date: **FEB,08,1019**
 By: **ROBERT HALL**

Project Information

For: **PARK PLACE LOT 5 BLOCK 7**

Design Information

	Htg	Clg	Method	Infiltration	
Outside db (°F)	-9	97			Simplified
Inside db (°F)	70	75	Construction quality		Semi-tight
Design TD (°F)	79	22	Fireplaces		
Daily range	-	H			
Inside humidity (%)	50	50			
Moisture difference (gr/lb)	62	-21			

HEATING EQUIPMENT

Make Day & Night
 Trade AIRQUEST, ARCOAIRE, COMFORTMAK...
 Model N9MSE0801716A*D
 AHRI ref 9121750

Efficiency 95 AFUE
 Heating input 80000 Btuh
 Heating output 78000 Btuh
 Temperature rise 74 °F
 Actual air flow 1140 cfm
 Air flow factor 0.031 cfm/Btuh
 Static pressure 0.70 in H2O
 Space thermostat

COOLING EQUIPMENT

Make Day & Night
 Trade DAY & NIGHT
 Cond C4A330GKF*
 Coil EA*4X36L17A*++TDR
 AHRI ref 9882497
 Efficiency 11.0 EER, 13 SEER
 Sensible cooling 19600 Btuh
 Latent cooling 8400 Btuh
 Total cooling 28000 Btuh
 Actual air flow 1140 cfm
 Air flow factor 0.090 cfm/Btuh
 Static pressure 0.70 in H2O
 Load sensible heat ratio 1.00

ROOM NAME	Area (ft²)	Htg load (Btuh)	Clg load (Btuh)	Htg AVF (cfm)	Clg AVF (cfm)
FAMILY	595	5150	1072	159	97
STORAGE	102	1831	121	56	11
MECH	64	0	0	0	0
STAIRS	56	0	0	0	0
BED 1	221	2633	962	81	87
BASE BATH	54	453	27	14	2
BED 2	156	1292	655	40	59
BED 3	231	3579	811	110	73
MASTER BED	238	3574	1489	110	134
MASTER BATH	143	1419	915	44	82
MAIN BATH	45	548	275	17	25
BED 5 WIC	56	1439	491	44	44
BED 5	180	3324	1505	103	136
LAUNDRY	80	2157	580	67	52

Bold/italic values have been manually overridden

Calculations approved by ACCA to meet all requirements of Manual J 8th Ed.

PANTRY		96	0	0	0	0
KIT/LIV/ENTRY		687	9543	3748	294	338
Entire House	d	3004	36943	12653	1140	1140
Other equip loads			8000	2206		
Equip. @ 1.02 RSM				15111		
Latent cooling				0		
TOTALS		3004	44943	15111	1140	1140

Bold/italic values have been manually overridden

Calculations approved by ACCA to meet all requirements of Manual J 8th Ed.

Building Analysis

Entire House

CASTLE ROCK HOMES

Job: PARK PLACE
Date: FEB,08,1019
By: ROBERT HALL

Project Information

For: PARK PLACE LOT 5 BLOCK 7

Design Conditions

Location:

Idaho Falls Fanning Field, ID, US
Elevation: 4744 ft
Latitude: 44 °N

Outdoor:

Dry bulb (°F)
Daily range (°F)
Wet bulb (°F)
Wind speed (mph)

Heating

15.0

Cooling

34 (H)

7.5

Indoor:

Indoor temperature (°F)
Design TD (°F)
Relative humidity (%)
Moisture difference (gr/lb)

Heating

70
79
50
62.1

Cooling

75
22
50
-21.2

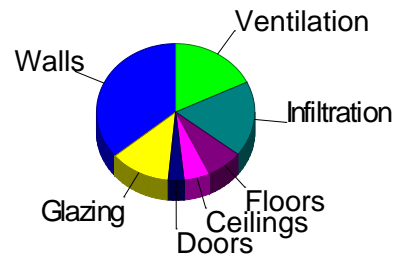
Infiltration:

Method
Construction quality
Fireplaces

Simplified
Semi-tight
0

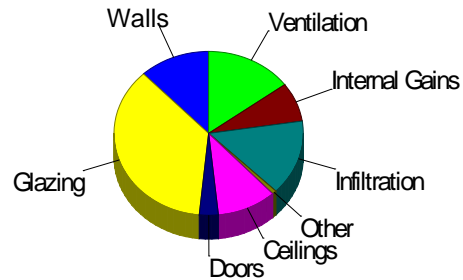
Heating

Component	Btuh/ft²	Btuh	% of load
Walls	5.2	16203	36.1
Glazing	25.2	5591	12.4
Doors	22.8	1438	3.2
Ceilings	1.6	2400	5.3
Floors	2.2	3311	7.4
Infiltration	3.7	8000	17.8
Ducts		0	0
Piping		0	0
Humidification		0	0
Ventilation		8000	17.8
Adjustments		0	0
Total		44943	100.0



Cooling

Component	Btuh/ft²	Btuh	% of load
Walls	0.6	1796	12.1
Glazing	24.3	5399	36.3
Doors	7.6	478	3.2
Ceilings	1.0	1514	10.2
Floors	0.1	111	0.7
Infiltration	1.0	2206	14.8
Ducts		0	0
Ventilation		2206	14.8
Internal gains		1150	7.7
Blower		0	0
Adjustments		0	0
Total		14858	100.0



Latent Cooling Load = 0 Btuh
Overall U-value = 0.057 Btuh/ft²-°F

Data entries checked.

Project Information

For: PARK PLACE LOT 5 BLOCK 7

Design Conditions

Location:		Indoor:		Heating	Cooling
Idaho Falls Fanning Field, ID, US		Indoor temperature (°F)		70	75
Elevation: 4744 ft		Design TD (°F)		79	22
Latitude: 44 °N		Relative humidity (%)		50	50
		Moisture difference (gr/lb)		62.1	-21.2
Outdoor:	Heating	Cooling	Infiltration:		
Dry bulb (°F)	-9	97	Method	Simplified	
Daily range (°F)	-	34 (H)	Construction quality	Semi-tight	
Wet bulb (°F)	-	64	Fireplaces	0	
Wind speed (mph)	15.0	7.5			

Construction descriptions

Construction descriptions	Or	Area ft²	U-value Btuh/ft²·°F	Insul R ft²·°F/Btuh	Htg HTM Btuh/ft²	Loss Clg Btuh	HTM Btuh/ft²	Gain Btuh
Walls								
12F-0sw: Frm wall, vnl ext, 3/8" wood shth, r-21 cav ins, 1/2" gypsum board int fnsh, 2"x6" wood frm, 16" o.c. stud	n	335	0.065	21.0	5.12	1714	0.97	326
	e	385	0.065	21.0	5.12	1969	0.97	374
	s	366	0.065	21.0	5.12	1872	0.97	356
	w	385	0.065	21.0	5.12	1969	0.97	374
	all	1471	0.065	21.0	5.12	7525	0.97	1429
15B15-0wc-6: Bg wall, heavy dry or light damp soil, 2"x4" wood int frm, concrete wall, r-17 cav ins, 8" thk, 1/2" gypsum board int fnsh	n	441	0.061	15.0	5.39	2377	0.25	110
	e	373	0.061	15.0	5.26	1962	0.19	73
	s	425	0.061	15.0	5.33	2267	0.23	96
	w	389	0.061	15.0	5.33	2073	0.22	87
	all	1628	0.061	15.0	5.33	8678	0.22	366
Partitions								
(none)								
Windows								
new window: 2 glazing, clr low-e outr, air gas, vnl frm mat, clr innr, 1/4" gap, 1/8" thk; 6.67 ft head ht	n	85	0.320	0	25.2	2141	13.0	1107
	e	20	0.320	0	25.2	504	36.9	738
	e	32	0.320	0	25.2	806	36.9	1180
	s	33	0.320	0	25.2	831	21.3	704
	s	16	0.320	0	25.2	403	21.3	341
	w	20	0.320	0	25.2	504	36.9	738
	w	16	0.320	0	25.2	403	36.9	590
	all	222	0.320	0	25.2	5591	24.3	5399
Doors								
11P0: Door, mtl pur core type	n	21	0.290	10.5	22.8	479	7.58	159
	s	42	0.290	10.5	22.8	959	7.58	319
	all	63	0.290	10.5	22.8	1438	7.58	478
Ceilings								
16B-50ad: Attic ceiling, asphalt shingles roof mat, r-50 ceil ins, 1/2" gypsum board int fnsh		1525	0.020	50.0	1.57	2400	0.99	1514

Floors

19A-0bswp: Part floor, hrd wd flr fnsh, frm flr, 6" thkns, 1/2" gypsum board int fnsh	46	0.295	0	8.72	401	2.40	111
21A-24t: Bg floor, heavy dry or light damp soil, 6' depth, carp 80% flr fnsh	1479	0.025	0	1.97	2910	0	0

Project Information

For: PARK PLACE LOT 5 BLOCK 7

Design Conditions

Location:		Indoor:		Heating	Cooling
Idaho Falls Fanning Field, ID, US		Indoor temperature (°F)		70	75
Elevation: 4744 ft		Design TD (°F)		79	22
Latitude: 44 °N		Relative humidity (%)		50	50
		Moisture difference (gr/lb)		62.1	-21.2
Outdoor:	Heating	Cooling	Infiltration:		
Dry bulb (°F)	-9	97	Method		
Daily range (°F)	-	34 (H)	Construction quality		
Wet bulb (°F)	-	64	Fireplaces		
Wind speed (mph)	15.0	7.5	Simplified		
			Semi-tight		
			0		

Construction descriptions

	Or	Area	U-value	Insul R	Htg HTM	Loss Clg HTM	Gain	
		ft²	Btuh/ft²·°F	ft²·°F/Btuh	Btuh/ft²	Btuh	Btuh/ft²	
Walls								
15B15-0wc-6: Bg wall, heavy dry or light damp soil, 2"x4" wood int frm,	n	288	0.061	15.0	5.39	1553	0.25	72
concrete wall, r-17 cav ins, 8" thk, 1/2" gypsum board int fnsh	e	27	0.061	15.0	5.39	146	0.25	7
	w	146	0.061	15.0	5.22	763	0.18	26
	all	461	0.061	15.0	5.34	2461	0.23	105
Partitions								
(none)								
Windows								
BASEMENT WINDOWS: 2 glazing, clr low-e outr, air gas, vnl frm mat,	w	16	0.320	0	25.2	403	36.9	590
clr innr, 1/4" gap, 1/8" thk; 6.67 ft head ht								
Doors								
(none)								
Ceilings								
(none)								
Floors								
21A-24t: Bg floor, heavy dry or light damp soil, 6' depth, carp 80% flr		595	0.025	0	1.97	1171	0	0
fnsh								

Component Constructions
STORAGE
CASTLE ROCK HOMES

Job: PARK PLACE
 Date: FEB.08,1019
 By: ROBERT HALL

Project Information

For: PARK PLACE LOT 5 BLOCK 7

Design Conditions

Location:		Indoor:		Heating	Cooling
Idaho Falls Fanning Field, ID, US		Indoor temperature (°F)		70	75
Elevation: 4744 ft		Design TD (°F)		79	22
Latitude: 44 °N		Relative humidity (%)		50	50
		Moisture difference (gr/lb)		62.1	-21.2
Outdoor:	Heating	Cooling	Infiltration:		
Dry bulb (°F)	-9	97	Method	Simplified	
Daily range (°F)	-	34 (H)	Construction quality	Semi-tight	
Wet bulb (°F)	-	64	Fireplaces	0	
Wind speed (mph)	15.0	7.5			

Construction descriptions

Walls

15B15-0wc-6: Bg wall, heavy dry or light damp soil, 2"x4" wood int frm, concrete wall, r-17 cav ins, 8" thk, 1/2" gypsum board int fnsh

Or	Area	U-value	Insul R	Htg HTM	Loss Clg	HTM	Gain
	ft²	Btuh/ft²·°F	ft²·°F/Btuh	Btuh/ft²	Btuh	Btuh/ft²	Btuh
s	153	0.061	15.0	5.39	825	0.25	38
w	54	0.061	15.0	5.39	291	0.25	14
all	207	0.061	15.0	5.39	1116	0.25	52

Partitions
(none)

Windows
(none)

Doors
(none)

Ceilings
(none)

Floors

21A-24t: Bg floor, heavy dry or light damp soil, 6' depth, carp 80% flr fnsh

102	0.025	0	1.97	201	0	0
-----	-------	---	------	-----	---	---

Component Constructions
MECH
CASTLE ROCK HOMES

Job: PARK PLACE
 Date: FEB.08,1019
 By: ROBERT HALL

Project Information

For: PARK PLACE LOT 5 BLOCK 7

Design Conditions

Location:		Indoor:		Heating	Cooling
Idaho Falls Fanning Field, ID, US		Indoor temperature (°F)		70	75
Elevation: 4744 ft		Design TD (°F)		79	22
Latitude: 44 °N		Relative humidity (%)		50	50
		Moisture difference (gr/lb)		62.1	-21.2
Outdoor:	Heating	Cooling	Infiltration:		
Dry bulb (°F)	-9	97	Method		
Daily range (°F)	-	34 (H)	Simplified		
Wet bulb (°F)	-	64	Construction quality		
Wind speed (mph)	15.0	7.5	Semi-tight		
			Fireplaces		
			0		

Construction descriptions

Walls

15B15-0wc-6: Bg wall, heavy dry or light damp soil, 2"x4" wood int frm, concrete wall, r-17 cav ins, 8" thk, 1/2" gypsum board int fnsh

Or	Area	U-value	Insul R	Htg HTM	Loss Clg	HTM	Gain
	ft²	Btuh/ft²·°F	ft²·°F/Btuh	Btuh/ft²	Btuh	Btuh/ft²	Btuh
s	72	0.061	15.0	5.39	388	0.25	18
w	18	0.061	15.0	5.39	97	0.25	5
all	90	0.061	15.0	5.39	485	0.25	23

Partitions
(none)

Windows
(none)

Doors
(none)

Ceilings
(none)

Floors

21A-24t: Bg floor, heavy dry or light damp soil, 6' depth, carp 80% flr fnsh

64	0.025	0	1.97	126	0	0
----	-------	---	------	-----	---	---

Component Constructions
STAIRS
CASTLE ROCK HOMES

Job: PARK PLACE
 Date: FEB.08,1019
 By: ROBERT HALL

Project Information

For: PARK PLACE LOT 5 BLOCK 7

Design Conditions

Location:			Indoor:		Heating	Cooling
Idaho Falls Fanning Field, ID, US			Indoor temperature (°F)		70	75
Elevation: 4744 ft			Design TD (°F)		79	22
Latitude: 44 °N			Relative humidity (%)		50	50
			Moisture difference (gr/lb)		62.1	-21.2
Outdoor:	Heating	Cooling	Infiltration:			
Dry bulb (°F)	-9	97	Method		Simplified	
Daily range (°F)	-	34 (H)	Construction quality		Semi-tight	
Wet bulb (°F)	-	64	Fireplaces		0	
Wind speed (mph)	15.0	7.5				

Construction descriptions

	Or	Area	U-value	Insul R	Htg HTM	Loss Clg HTM	Gain	
		ft²	Btuh/ft²·°F	ft²·°F/Btuh	Btuh/ft²	Btuh	Btuh/ft²	
Walls								
15B15-0wc-6: Bg wall, heavy dry or light damp soil, 2"x4" wood int frm, concrete wall, r-17 cav ins, 8" thk, 1/2" gypsum board int fnsh	s	27	0.061	15.0	5.39	146	0.25	7
Partitions								
(none)								
Windows								
(none)								
Doors								
(none)								
Ceilings								
(none)								
Floors								
21A-24t: Bg floor, heavy dry or light damp soil, 6' depth, carp 80% flr fnsh		56	0.025	0	1.97	110	0	0

Component Constructions
BED 1
CASTLE ROCK HOMES

Job: PARK PLACE
 Date: FEB.08,1019
 By: ROBERT HALL

Project Information

For: PARK PLACE LOT 5 BLOCK 7

Design Conditions

Location:		Indoor:		Heating	Cooling
Idaho Falls Fanning Field, ID, US		Indoor temperature (°F)		70	75
Elevation: 4744 ft		Design TD (°F)		79	22
Latitude: 44 °N		Relative humidity (%)		50	50
		Moisture difference (gr/lb)		62.1	-21.2
Outdoor:	Heating	Cooling	Infiltration:		
Dry bulb (°F)	-9	97	Method		
Daily range (°F)	-	34 (H)	Construction quality		
Wet bulb (°F)	-	64	Fireplaces		
Wind speed (mph)	15.0	7.5	Simplified		
			Semi-tight		
			0		

Construction descriptions

	Or	Area	U-value	Insul R	Htg HTM	Loss Clg HTM	Gain	
		ft²	Btuh/ft²·°F	ft²·°F/Btuh	Btuh/ft²	Btuh	Btuh/ft²	
Walls								
15B15-0wc-6: Bg wall, heavy dry or light damp soil, 2"x4" wood int frm, concrete wall, r-17 cav ins, 8" thk, 1/2" gypsum board int fnsh	n	153	0.061	15.0	5.39	825	0.25	38
	e	101	0.061	15.0	5.15	520	0.15	15
	w	27	0.061	15.0	5.39	146	0.25	7
	all	281	0.061	15.0	5.30	1490	0.21	60
Partitions								
(none)								
Windows								
BASEMENT WINDOWS: 2 glazing, clr low-e outr, air gas, vnl frm mat, clr innr, 1/4" gap, 1/8" thk; 6.67 ft head ht	e	16	0.320	0	25.2	403	36.9	590
Doors								
(none)								
Ceilings								
(none)								
Floors								
21A-24t: Bg floor, heavy dry or light damp soil, 6' depth, carp 80% flr fnsh		221	0.025	0	1.97	435	0	0

Component Constructions
BASE BATH
CASTLE ROCK HOMES

Job: PARK PLACE
 Date: FEB.08,1019
 By: ROBERT HALL

Project Information

For: PARK PLACE LOT 5 BLOCK 7

Design Conditions

Location:			Indoor:		Heating	Cooling
Idaho Falls Fanning Field, ID, US			Indoor temperature (°F)		70	75
Elevation: 4744 ft			Design TD (°F)		79	22
Latitude: 44 °N			Relative humidity (%)		50	50
			Moisture difference (gr/lb)		62.1	-21.2
Outdoor:	Heating	Cooling	Infiltration:			
Dry bulb (°F)	-9	97	Method		Simplified	
Daily range (°F)	-	34 (H)	Construction quality		Semi-tight	
Wet bulb (°F)	-	64	Fireplaces		0	
Wind speed (mph)	15.0	7.5				

Construction descriptions

	Or	Area ft²	U-value Btuh/ft²·°F	Insul R ft²·°F/Btuh	Htg HTM Btuh/ft²	Loss Clg HTM Btuh	HTM Btuh/ft²	Gain Btuh
Walls								
15B15-0wc-6: Bg wall, heavy dry or light damp soil, 2"x4" wood int frm, concrete wall, r-17 cav ins, 8" thk, 1/2" gypsum board int fnsh	e	54	0.061	15.0	5.39	291	0.25	14
Partitions (none)								
Windows (none)								
Doors (none)								
Ceilings (none)								
Floors								
21A-24t: Bg floor, heavy dry or light damp soil, 6' depth, carp 80% flr fnsh		54	0.025	0	1.97	106	0	0

Component Constructions
BED 2
CASTLE ROCK HOMES

Job: PARK PLACE
 Date: FEB.08,1019
 By: ROBERT HALL

Project Information

For: PARK PLACE LOT 5 BLOCK 7

Design Conditions

Location:		Indoor:		Heating	Cooling
Idaho Falls Fanning Field, ID, US		Indoor temperature (°F)		70	75
Elevation: 4744 ft		Design TD (°F)		79	22
Latitude: 44 °N		Relative humidity (%)		50	50
		Moisture difference (gr/lb)		62.1	-21.2
Outdoor:	Heating	Cooling	Infiltration:		
Dry bulb (°F)	-9	97	Method		
Daily range (°F)	-	34 (H)	Construction quality		
Wet bulb (°F)	-	64	Fireplaces		
Wind speed (mph)	15.0	7.5	Simplified		
			Semi-tight		
			0		

Construction descriptions

	Or	Area ft²	U-value Btuh/ft²·°F	Insul R ft²·°F/Btuh	Htg HTM Btuh/ft²	Loss Clg HTM Btuh	Btuh/ft²	Gain Btuh
Walls								
15B15-0wc-6: Bg wall, heavy dry or light damp soil, 2"x4" wood int frm, concrete wall, r-17 cav ins, 8" thk, 1/2" gypsum board int fnsh	e	92	0.061	15.0	5.12	471	0.14	13
Partitions								
(none)								
Windows								
BASEMENT WINDOWS: 2 glazing, clr low-e outr, air gas, vnl frm mat, clr innr, 1/4" gap, 1/8" thk; 6.67 ft head ht	e	16	0.320	0	25.2	403	36.9	590
Doors								
(none)								
Ceilings								
(none)								
Floors								
21A-24t: Bg floor, heavy dry or light damp soil, 6' depth, carp 80% flr fnsh		156	0.025	0	1.97	307	0	0



Component Constructions
BED 3
CASTLE ROCK HOMES

Job: PARK PLACE
 Date: FEB.08,1019
 By: ROBERT HALL

Project Information

For: PARK PLACE LOT 5 BLOCK 7

Design Conditions

Location:		Indoor:		Heating	Cooling
Idaho Falls Fanning Field, ID, US		Indoor temperature (°F)		70	75
Elevation: 4744 ft		Design TD (°F)		79	22
Latitude: 44 °N		Relative humidity (%)		50	50
		Moisture difference (gr/lb)		62.1	-21.2
Outdoor:	Heating	Cooling	Infiltration:		
Dry bulb (°F)	-9	97	Method		
Daily range (°F)	-	34 (H)	Construction quality		
Wet bulb (°F)	-	64	Fireplaces		
Wind speed (mph)	15.0	7.5	Simplified		
			Semi-tight		
			0		

Construction descriptions

	Or	Area	U-value	Insul R	Htg HTM	Loss Clg HTM	Gain	
		ft²	Btuh/ft²·°F	ft²·°F/Btuh	Btuh/ft²	Btuh	Btuh/ft²	
Walls								
15B15-0wc-6: Bg wall, heavy dry or light damp soil, 2"x4" wood int frm, concrete wall, r-17 cav ins, 8" thk, 1/2" gypsum board int fnsh	e	99	0.061	15.0	5.39	534	0.25	25
	s	173	0.061	15.0	5.25	908	0.19	33
	w	144	0.061	15.0	5.39	776	0.25	36
	all	416	0.061	15.0	5.33	2218	0.23	94
Partitions								
(none)								
Windows								
BASEMENT WINDOWS: 2 glazing, clr low-e outr, air gas, vnl frm mat, clr innr, 1/4" gap, 1/8" thk; 6.67 ft head ht	s	16	0.320	0	25.2	403	21.3	341
Doors								
(none)								
Ceilings								
(none)								
Floors								
21A-24t: Bg floor, heavy dry or light damp soil, 6' depth, carp 80% flr fnsh		231	0.025	0	1.97	454	0	0

Component Constructions
MASTER BED
CASTLE ROCK HOMES

Job: PARK PLACE
Date: FEB.08,1019
By: ROBERT HALL

Project Information

For: PARK PLACE LOT 5 BLOCK 7

Design Conditions

Location:		Indoor:		Heating	Cooling
Idaho Falls Fanning Field, ID, US		Indoor temperature (°F)		70	75
Elevation: 4744 ft		Design TD (°F)		79	22
Latitude: 44 °N		Relative humidity (%)		50	50
		Moisture difference (gr/lb)		62.1	-21.2
Outdoor:	Heating	Cooling	Infiltration:		
Dry bulb (°F)	-9	97	Method		
Daily range (°F)	-	34 (H)	Construction quality		
Wet bulb (°F)	-	64	Fireplaces		
Wind speed (mph)	15.0	7.5	Simplified		
			Semi-tight		
			0		

Construction descriptions

	Or	Area	U-value	Insul R	Htg HTM	Loss Clg HTM	Gain	
		ft²	Btuh/ft²·°F	ft²·°F/Btuh	Btuh/ft²	Btuh	Btuh/ft²	
Walls								
12F-0sw: Frm wall, vnl ext, 3/8" wood shth, r-21 cav ins, 1/2" gypsum board int fnsh, 2"x6" wood frm, 16" o.c. stud	n	128	0.065	21.0	5.12	655	0.97	124
	e	126	0.065	21.0	5.12	645	0.97	122
	w	27	0.065	21.0	5.12	138	0.97	26
	all	281	0.065	21.0	5.12	1437	0.97	273
Partitions								
(none)								
Windows								
new window: 2 glazing, clr low-e outr, air gas, vnl frm mat, clr innr, 1/4" gap, 1/8" thk; 6.67 ft head ht	n	25	0.320	0	25.2	630	13.0	325
Doors								
(none)								
Ceilings								
16B-50ad: Attic ceiling, asphalt shingles roof mat, r-50 ceil ins, 1/2" gypsum board int fnsh		238	0.020	50.0	1.57	375	0.99	236
Floors								
(none)								

Component Constructions
MASTER BATH
CASTLE ROCK HOMES

Job: PARK PLACE
 Date: FEB.08,1019
 By: ROBERT HALL

Project Information

For: PARK PLACE LOT 5 BLOCK 7

Design Conditions

Location:		Indoor:		Heating	Cooling
Idaho Falls Fanning Field, ID, US		Indoor temperature (°F)		70	75
Elevation: 4744 ft		Design TD (°F)		79	22
Latitude: 44 °N		Relative humidity (%)		50	50
		Moisture difference (gr/lb)		62.1	-21.2
Outdoor:	Heating	Cooling	Infiltration:		
Dry bulb (°F)	-9	97	Method		
Daily range (°F)	-	34 (H)	Construction quality		
Wet bulb (°F)	-	64	Fireplaces		
Wind speed (mph)	15.0	7.5	Simplified		
			Semi-tight		
			0		

Construction descriptions

	Or	Area ft²	U-value Btuh/ft²·°F	Insul R ft²·°F/Btuh	Htg HTM Btuh/ft²	Loss Clg HTM Btuh	Btuh/ft²	Gain Btuh
Walls								
12F-0sw: Frm wall, vnl ext, 3/8" wood shth, r-21 cav ins, 1/2" gypsum board int fnsh, 2"x6" wood frm, 16" o.c. stud	e	83	0.065	21.0	5.12	425	0.97	81
Partitions								
(none)								
Windows								
new window: 2 glazing, clr low-e outr, air gas, vnl frm mat, clr innr, 1/4" gap, 1/8" thk; 6.67 ft head ht	e	16	0.320	0	25.2	403	36.9	590
Doors								
(none)								
Ceilings								
16B-50ad: Attic ceiling, asphalt shingles roof mat, r-50 ceil ins, 1/2" gypsum board int fnsh		143	0.020	50.0	1.57	225	0.99	142
Floors								
(none)								



Component Constructions
 MAIN BATH
 CASTLE ROCK HOMES

Job: PARK PLACE
 Date: FEB.08,1019
 By: ROBERT HALL

Project Information

For: PARK PLACE LOT 5 BLOCK 7

Design Conditions

Location:		Indoor:		Heating	Cooling
Idaho Falls Fanning Field, ID, US		Indoor temperature (°F)		70	75
Elevation: 4744 ft		Design TD (°F)		79	22
Latitude: 44 °N		Relative humidity (%)		50	50
		Moisture difference (gr/lb)		62.1	-21.2
Outdoor:	Heating	Cooling	Infiltration:		
Dry bulb (°F)	-9	97	Method		
Daily range (°F)	-	34 (H)	Construction quality		
Wet bulb (°F)	-	64	Fireplaces		
Wind speed (mph)	15.0	7.5	Simplified		
			Semi-tight		
			0		

Construction descriptions

	Or	Area ft²	U-value Btuh/ft²·°F	Insul R ft²·°F/Btuh	Htg HTM Btuh/ft²	Loss Clg HTM Btuh	HTM Btuh/ft²	Gain Btuh
Walls								
12F-0sw: Frm wall, vnl ext, 3/8" wood shth, r-21 cav ins, 1/2" gypsum board int fnsh, 2"x6" wood frm, 16" o.c. stud								
	e	41	0.065	21.0	5.12	210	0.97	40
Partitions								
(none)								
Windows								
new window: 2 glazing, clr low-e outr, air gas, vnl frm mat, clr innr, 1/4" gap, 1/8" thk; 6.67 ft head ht								
	e	4	0.320	0	25.2	101	36.9	148
Doors								
(none)								
Ceilings								
16B-50ad: Attic ceiling, asphalt shingles roof mat, r-50 ceil ins, 1/2" gypsum board int fnsh								
		45	0.020	50.0	1.57	71	0.99	45
Floors								
(none)								



Component Constructions
 BED 5 WIC
 CASTLE ROCK HOMES

Job: PARK PLACE
 Date: FEB.08,1019
 By: ROBERT HALL

Project Information

For: PARK PLACE LOT 5 BLOCK 7

Design Conditions

Location:		Indoor:		Heating	Cooling
Idaho Falls Fanning Field, ID, US		Indoor temperature (°F)		70	75
Elevation: 4744 ft		Design TD (°F)		79	22
Latitude: 44 °N		Relative humidity (%)		50	50
		Moisture difference (gr/lb)		62.1	-21.2
Outdoor:	Heating	Cooling	Infiltration:		
Dry bulb (°F)	-9	97	Method		
Daily range (°F)	-	34 (H)	Construction quality		
Wet bulb (°F)	-	64	Fireplaces		
Wind speed (mph)	15.0	7.5	Simplified		
			Semi-tight		
			0		

Construction descriptions

	Or	Area ft²	U-value Btuh/ft²·°F	Insul R ft²·°F/Btuh	Htg HTM Btuh/ft²	Loss Clg HTM Btuh	HTM Btuh/ft²	Gain Btuh
Walls 12F-0sw: Frm wall, vnl ext, 3/8" wood shth, r-21 cav ins, 1/2" gypsum board int fnsh, 2"x6" wood frm, 16" o.c. stud	e	63	0.065	21.0	5.12	322	0.97	61
	s	64	0.065	21.0	5.12	327	0.97	62
	all	127	0.065	21.0	5.12	650	0.97	123

Partitions
(none)

Windows new window: 2 glazing, clr low-e outr, air gas, vnl frm mat, clr innr, 1/4" gap, 1/8" thk; 6.67 ft head ht	s	8	0.320	0	25.2	201	21.3	171
--	---	---	-------	---	------	-----	------	-----

Doors
(none)

Ceilings 16B-50ad: Attic ceiling, asphalt shingles roof mat, r-50 ceil ins, 1/2" gypsum board int fnsh		56	0.020	50.0	1.57	88	0.99	56
--	--	----	-------	------	------	----	------	----

Floors
(none)



Component Constructions
BED 5
CASTLE ROCK HOMES

Job: PARK PLACE
Date: FEB.08,1019
By: ROBERT HALL

Project Information

For: PARK PLACE LOT 5 BLOCK 7

Design Conditions

Location:		Indoor:		Heating	Cooling
Idaho Falls Fanning Field, ID, US		Indoor temperature (°F)		70	75
Elevation: 4744 ft		Design TD (°F)		79	22
Latitude: 44 °N		Relative humidity (%)		50	50
		Moisture difference (gr/lb)		62.1	-21.2
Outdoor:	Heating	Cooling	Infiltration:		
Dry bulb (°F)	-9	97	Method		
Daily range (°F)	-	34 (H)	Construction quality		
Wet bulb (°F)	-	64	Fireplaces		
Wind speed (mph)	15.0	7.5	Simplified		
			Semi-tight		
			0		

Construction descriptions

Walls

12F-0sw: Frm wall, vnl ext, 3/8" wood shth, r-21 cav ins, 1/2" gypsum board int fnsh, 2"x6" wood frm, 16" o.c. stud

Or	Area ft²	U-value Btuh/ft²·°F	Insul R ft²·°F/Btuh	Htg HTM Btuh/ft²	Loss Clg HTM Btuh	HTM Btuh/ft²	Gain Btuh
e	45	0.065	21.0	5.12	230	0.97	44
s	92	0.065	21.0	5.12	471	0.97	89
w	126	0.065	21.0	5.12	645	0.97	122
all	263	0.065	21.0	5.12	1345	0.97	256

Partitions

(none)

Windows

new window: 2 glazing, clr low-e outr, air gas, vnl frm mat, clr innr, 1/4" gap, 1/8" thk; 6.67 ft head ht

s	25	0.320	0	25.2	630	21.3	534
---	----	-------	---	------	-----	------	-----

Doors

(none)

Ceilings

16B-50ad: Attic ceiling, asphalt shingles roof mat, r-50 ceil ins, 1/2" gypsum board int fnsh

	180	0.020	50.0	1.57	283	0.99	179
--	-----	-------	------	------	-----	------	-----

Floors

(none)

Component Constructions
LAUNDRY
CASTLE ROCK HOMES

Job: PARK PLACE
Date: FEB.08,1019
By: ROBERT HALL

Project Information

For: PARK PLACE LOT 5 BLOCK 7

Design Conditions

Location:		Indoor:		Heating	Cooling
Idaho Falls Fanning Field, ID, US		Indoor temperature (°F)		70	75
Elevation: 4744 ft		Design TD (°F)		79	22
Latitude: 44 °N		Relative humidity (%)		50	50
		Moisture difference (gr/lb)		62.1	-21.2
Outdoor:	Heating	Cooling	Infiltration:		
Dry bulb (°F)	-9	97	Method		
Daily range (°F)	-	34 (H)	Construction quality		
Wet bulb (°F)	-	64	Fireplaces		
Wind speed (mph)	15.0	7.5	Simplified		
			Semi-tight		
			0		

Construction descriptions

	Or	Area ft²	U-value Btuh/ft²·°F	Insul R ft²·°F/Btuh	Htg HTM Btuh/ft²	Loss Clg HTM Btuh	HTM Btuh/ft²	Gain Btuh
Walls								
12F-0sw: Frm wall, vnl ext, 3/8" wood shth, r-21 cav ins, 1/2" gypsum board int fnsh, 2"x6" wood frm, 16" o.c. stud	s	69	0.065	21.0	5.12	353	0.97	67
Partitions (none)								
Windows (none)								
Doors								
11P0: Door, mtl pur core type	s	21	0.290	10.5	22.8	479	7.58	159
Ceilings								
16B-50ad: Attic ceiling, asphalt shingles roof mat, r-50 ceil ins, 1/2" gypsum board int fnsh		80	0.020	50.0	1.57	126	0.99	79
Floors								
19A-0bswp: Part floor, hrd wd flr fnsh, frm flr, 6" thkns, 1/2" gypsum board int fnsh		10	0.295	0	8.72	87	2.40	24



Component Constructions
PANTRY
CASTLE ROCK HOMES

Job: PARK PLACE
 Date: FEB.08,1019
 By: ROBERT HALL

Project Information

For: PARK PLACE LOT 5 BLOCK 7

Design Conditions

Location:		Indoor:		Heating	Cooling
Idaho Falls Fanning Field, ID, US		Indoor temperature (°F)		70	75
Elevation: 4744 ft		Design TD (°F)		79	22
Latitude: 44 °N		Relative humidity (%)		50	50
		Moisture difference (gr/lb)		62.1	-21.2
Outdoor:	Heating	Cooling	Infiltration:		
Dry bulb (°F)	-9	97	Method		
Daily range (°F)	-	34 (H)	Construction quality		
Wet bulb (°F)	-	64	Fireplaces		
Wind speed (mph)	15.0	7.5	Simplified		
			Semi-tight		
			0		

Construction descriptions

	Or	Area	U-value	Insul R	Htg HTM	Loss Clg HTM	Gain	
		ft²	Btuh/ft²·°F	ft²·°F/Btuh	Btuh/ft²	Btuh	Btuh/ft²	
Walls								
12F-0sw: Frm wall, vnl ext, 3/8" wood shth, r-21 cav ins, 1/2" gypsum board int fnsh, 2"x6" wood frm, 16" o.c. stud								
	s	108	0.065	21.0	5.12	552	0.97	105
	w	72	0.065	21.0	5.12	368	0.97	70
	all	180	0.065	21.0	5.12	921	0.97	175
Partitions								
(none)								
Windows								
(none)								
Doors								
(none)								
Ceilings								
16B-50ad: Attic ceiling, asphalt shingles roof mat, r-50 ceil ins, 1/2" gypsum board int fnsh								
		96	0.020	50.0	1.57	151	0.99	95
Floors								
19A-0bswp: Part floor, hrd wd flr fnsh, frm flr, 6" thkns, 1/2" gypsum board int fnsh								
		24	0.295	0	8.72	209	2.40	58

Component Constructions
KIT/LIV/ENTRY
CASTLE ROCK HOMES

Job: PARK PLACE
Date: FEB.08,1019
By: ROBERT HALL

Project Information

For: PARK PLACE LOT 5 BLOCK 7

Design Conditions

Location:		Indoor:		Heating	Cooling
Idaho Falls Fanning Field, ID, US		Indoor temperature (°F)		70	75
Elevation: 4744 ft		Design TD (°F)		79	22
Latitude: 44 °N		Relative humidity (%)		50	50
		Moisture difference (gr/lb)		62.1	-21.2
Outdoor:	Heating	Cooling	Infiltration:		
Dry bulb (°F)	-9	97	Method		
Daily range (°F)	-	34 (H)	Construction quality		
Wet bulb (°F)	-	64	Fireplaces		
Wind speed (mph)	15.0	7.5	Simplified		
			Semi-tight		
			0		

Construction descriptions

	Or	Area ft²	U-value Btuh/ft²·°F	Insul R ft²·°F/Btuh	Htg HTM Btuh/ft²	Loss Clg HTM Btuh	HTM Btuh/ft²	Gain Btuh	
Walls									
12F-0sw: Frm wall, vnl ext, 3/8" wood shth, r-21 cav ins, 1/2" gypsum board int fnsh, 2"x6" wood frm, 16" o.c. stud									
	n	207	0.065	21.0	5.12	1059	0.97	201	
	e	27	0.065	21.0	5.12	138	0.97	26	
	s	33	0.065	21.0	5.12	169	0.97	32	
	w	160	0.065	21.0	5.12	818	0.97	155	
	all	427	0.065	21.0	5.12	2184	0.97	415	
Partitions									
(none)									
Windows									
new window: 2 glazing, clr low-e outr, air gas, vnl frm mat, clr innr, 1/4" gap, 1/8" thk; 6.67 ft head ht									
	n	60	0.320	0	25.2	1511	13.0	781	
	w	20	0.320	0	25.2	504	36.9	738	
	all	80	0.320	0	25.2	2015	19.0	1519	
Doors									
11P0: Door, mtl pur core type									
	n	21	0.290	10.5	22.8	479	7.58	159	
	s	21	0.290	10.5	22.8	479	7.58	159	
	all	42	0.290	10.5	22.8	959	7.58	319	
Ceilings									
16B-50ad: Attic ceiling, asphalt shingles roof mat, r-50 ceil ins, 1/2" gypsum board int fnsh									
		687	0.020	50.0	1.57	1081	0.99	682	
Floors									
19A-0bswp: Part floor, hrd wd flr fnsh, frm flr, 6" thkns, 1/2" gypsum board int fnsh									
		12	0.295	0	8.72	105	2.40	29	

Project Summary

Entire House

CASTLE ROCK HOMES

Job: PARK PLACE
Date: FEB,08,1019
By: ROBERT HALL

Project Information

For: PARK PLACE LOT 5 BLOCK 7

Notes:

Design Information

Weather: Idaho Falls Fanning Field, ID, US

Winter Design Conditions

Outside db -9 °F
Inside db 70 °F
Design TD 79 °F

Summer Design Conditions

Outside db 97 °F
Inside db 75 °F
Design TD 22 °F
Daily range H
Relative humidity 50 %
Moisture difference -21 gr/lb

Heating Summary

Structure 36943 Btuh
Ducts 0 Btuh
Central vent (110 cfm) 8000 Btuh
Outside air
Humidification 0 Btuh
Piping 0 Btuh
Equipment load 44943 Btuh

Sensible Cooling Equipment Load Sizing

Structure 12653 Btuh
Ducts 0 Btuh
Central vent (110 cfm) 2206 Btuh
Outside air
Blower 0 Btuh
Use manufacturer's data n
Rate/swing multiplier 1.02
Equipment sensible load 15111 Btuh

Infiltration

Method Simplified
Construction quality Semi-tight
Fireplaces 0

	Heating	Cooling
Area (ft ²)	3004	3004
Volume (ft ³)	17423	17423
Air changes/hour	0.38	0.38
Equiv. AVF (cfm)	110	110

Latent Cooling Equipment Load Sizing

Structure -334 Btuh
Ducts 0 Btuh
Central vent (110 cfm) -1334 Btuh
Outside air
Equipment latent load 0 Btuh
Equipment total load 15111 Btuh
Req. total capacity at 0.70 SHR 1.8 ton

Heating Equipment Summary

Make Day & Night
Trade AIRQUEST, ARCOAIRE, COMFORTMAK...
Model N9MSE0801716A*D
AHRI ref 9121750

Efficiency 95 AFUE
Heating input 80000 Btuh
Heating output 78000 Btuh
Temperature rise 74 °F
Actual air flow 1140 cfm
Air flow factor 0.031 cfm/Btuh
Static pressure 0.70 in H2O
Space thermostat

Cooling Equipment Summary

Make Day & Night
Trade DAY & NIGHT
Cond C4A330GKF*
Coil EA*4X36L17A*++TDR
AHRI ref 9882497
Efficiency 11.0 EER, 13 SEER
Sensible cooling 19600 Btuh
Latent cooling 8400 Btuh
Total cooling 28000 Btuh
Actual air flow 1140 cfm
Air flow factor 0.090 cfm/Btuh
Static pressure 0.70 in H2O
Load sensible heat ratio 1.00

Bold/italic values have been manually overridden

Calculations approved by ACCA to meet all requirements of Manual J 8th Ed.



Right-J® Worksheet

Entire House

CASTLE ROCK HOMES

Job: **PARK PLACE**
 Date: **FEB,08,1019**
 By: **ROBERT HALL**

1		Room name		Entire House				FAMILY						
2		Exposed wall		376.0 ft				53.0 ft						
3		Room height		9.0 ft				9.0 ft						
4		Room dimensions		d				1.0 x 595.0 ft						
5		Room area		3004.0 ft²				595.0 ft²						
	Ty	Construction number	U-value (Btuh/ft²·°F)	Or	HTM (Btuh/ft²)		Area (ft²) or perimeter (ft)		Load (Btuh)		Area (ft²) or perimeter (ft)		Load (Btuh)	
					Heat	Cool	Gross	N/P/S	Heat	Cool	Gross	N/P/S	Heat	Cool
6	W	12F-0sw	0.065	n	5.12	0.97	441	335	1714	326	0	0	0	0
	G	new window	0.320	n	25.18	13.02	85	0	2141	1107	0	0	0	0
	D	11P0	0.290	n	22.82	7.58	21	21	479	159	0	0	0	0
	W	15B15-0wc-6	0.088	n	5.39	0.25	441	441	2377	110	288	288	1553	72
11	W	12F-0sw	0.065	e	5.12	0.97	405	385	1969	374	0	0	0	0
	G	new window	0.320	e	25.18	36.89	20	0	504	738	0	0	0	0
	W	15B15-0wc-6	0.088	e	5.26	0.19	405	373	1962	73	27	27	146	7
	G	BASEMENT WINDOWS	0.320	e	25.18	36.89	32	0	806	1180	0	0	0	0
	W	12F-0sw	0.065	s	5.12	0.97	441	366	1872	356	0	0	0	0
	G	new window	0.320	s	25.18	21.34	33	0	831	704	0	0	0	0
	D	11P0	0.290	s	22.82	7.58	42	42	959	319	0	0	0	0
	W	15B15-0wc-6	0.088	s	5.33	0.23	441	425	2267	96	0	0	0	0
	G	BASEMENT WINDOWS	0.320	s	25.18	21.34	16	0	403	341	0	0	0	0
	W	12F-0sw	0.065	w	5.12	0.97	405	385	1969	374	0	0	0	0
	G	new window	0.320	w	25.18	36.89	20	0	504	738	0	0	0	0
	W	15B15-0wc-6	0.088	w	5.33	0.22	405	389	2073	87	162	146	763	26
	G	BASEMENT WINDOWS	0.320	w	25.18	36.89	16	0	403	590	16	0	403	590
	C	16B-50ad	0.020	-	1.57	0.99	1525	1525	2400	1514	0	0	0	0
	F	19A-0bswp	0.295	-	8.72	2.40	46	46	401	111	0	0	0	0
	F	21A-24t	0.025	-	1.97	0.00	1479	1479	2910	0	595	595	1171	0
6	c) AED excursion									0				206
	Envelope loss/gain								28943	9297			4034	901
12	a) Infiltration								8000	2206			490	135
	b) Room ventilation								0	0			0	0
13	Internal gains:		Occupants @	230			5			1150	0			0
			Appliances/other							0				0
	Subtotal (lines 6 to 13)								36943	12653			4525	1036
	Less external load								0	0			0	0
	Less transfer								0	0			0	0
	Redistribution								0	0			626	36
14	Subtotal								36943	12653			5150	1072
15	Duct loads								0	0	-0%	0%	0	0
	Total room load								36943	12653			5150	1072
	Air required (cfm)								1140	1140			159	97

Calculations approved by ACCA to meet all requirements of Manual J 8th Ed.



Right-J® Worksheet

Entire House

CASTLE ROCK HOMES

Job: **PARK PLACE**
Date: **FEB,08,1019**
By: **ROBERT HALL**

1	Room name				STORAGE				MECH					
	Exposed wall				23.0 ft				10.0 ft					
	Room height				9.0 ft				9.0 ft					
3	Room dimensions				17.0 x 6.0 ft				8.0 x 8.0 ft					
5	Room area				102.0 ft²				64.0 ft²					
	Ty	Construction number	U-value (Btuh/ft²·°F)	Or	HTM (Btuh/ft²)		Area (ft²) or perimeter (ft)		Load (Btuh)		Area (ft²) or perimeter (ft)		Load (Btuh)	
					Heat	Cool	Gross	N/P/S	Heat	Cool	Gross	N/P/S	Heat	Cool
6	W	12F-0sw	0.065	n	5.12	0.97	0	0	0	0	0	0	0	0
	G	new window	0.320	n	25.18	13.02	0	0	0	0	0	0	0	0
	D	11P0	0.290	n	22.82	7.58	0	0	0	0	0	0	0	0
	W	15B15-0wc-6	0.088	n	5.39	0.25	0	0	0	0	0	0	0	0
11	W	12F-0sw	0.065	e	5.12	0.97	0	0	0	0	0	0	0	0
	G	new window	0.320	e	25.18	36.89	0	0	0	0	0	0	0	0
	W	15B15-0wc-6	0.088	e	5.26	0.19	0	0	0	0	0	0	0	0
	G	BASEMENT WINDOWS	0.320	e	25.18	36.89	0	0	0	0	0	0	0	0
	W	12F-0sw	0.065	s	5.12	0.97	0	0	0	0	0	0	0	0
	G	new window	0.320	s	25.18	21.34	0	0	0	0	0	0	0	0
	D	11P0	0.290	s	22.82	7.58	0	0	0	0	0	0	0	0
	W	15B15-0wc-6	0.088	s	5.33	0.23	153	153	825	38	72	72	388	18
	G	BASEMENT WINDOWS	0.320	s	25.18	21.34	0	0	0	0	0	0	0	0
	W	12F-0sw	0.065	w	5.12	0.97	0	0	0	0	0	0	0	0
	G	new window	0.320	w	25.18	36.89	0	0	0	0	0	0	0	0
	W	15B15-0wc-6	0.088	w	5.33	0.22	54	54	291	14	18	18	97	5
	G	BASEMENT WINDOWS	0.320	w	25.18	36.89	0	0	0	0	0	0	0	0
	C	16B-50ad	0.020	-	1.57	0.99	0	0	0	0	0	0	0	0
	F	19A-0bswd	0.295	-	8.72	2.40	0	0	0	0	0	0	0	0
	F	21A-24t	0.025	-	1.97	0.00	102	102	201	0	64	64	126	0
6	c) AED excursion													-4
	Envelope loss/gain								1317	44			611	19
12	a) Infiltration								213	59			93	26
	b) Room ventilation								0	0			0	0
13	Internal gains: Occupants @ 230						0			0	0			0
	Appliances/other									0				0
	Subtotal (lines 6 to 13)								1529	102			704	45
	Less external load								0	0			0	0
	Less transfer								0	0			0	0
	Redistribution								302	19			-704	-45
14	Subtotal								1831	121			0	0
15	Duct loads						-0%	0%	0	0	-0%	0%	0	0
	Total room load								1831	121			0	0
	Air required (cfm)								56	11			0	0

Calculations approved by ACCA to meet all requirements of Manual J 8th Ed.



Right-J® Worksheet

Entire House

CASTLE ROCK HOMES

Job: **PARK PLACE**
Date: **FEB,08,1019**
By: **ROBERT HALL**

1	Room name				STAIRS				BED 1					
2	Exposed wall				3.0 ft				33.0 ft					
3	Room height				9.0 ft				9.0 ft					
4	Room dimensions				7.0 x 8.0 ft				17.0 x 13.0 ft					
5	Room area				56.0 ft²				221.0 ft²					
	Ty	Construction number	U-value (Btuh/ft²·°F)	Or	HTM (Btuh/ft²)		Area (ft²) or perimeter (ft)		Load (Btuh)		Area (ft²) or perimeter (ft)		Load (Btuh)	
					Heat	Cool	Gross	N/P/S	Heat	Cool	Gross	N/P/S	Heat	Cool
6	W	12F-0sw	0.065	n	5.12	0.97	0	0	0	0	0	0	0	0
	G	new window	0.320	n	25.18	13.02	0	0	0	0	0	0	0	0
	D	11P0	0.290	n	22.82	7.58	0	0	0	0	0	0	0	0
	W	15B15-0wc-6	0.088	n	5.39	0.25	0	0	0	0	153	153	825	38
11	W	12F-0sw	0.065	e	5.12	0.97	0	0	0	0	0	0	0	0
	G	new window	0.320	e	25.18	36.89	0	0	0	0	0	0	0	0
	W	15B15-0wc-6	0.088	e	5.26	0.19	0	0	0	0	117	101	520	15
	G	BASEMENT WINDOWS	0.320	e	25.18	36.89	0	0	0	0	16	0	403	590
	W	12F-0sw	0.065	s	5.12	0.97	0	0	0	0	0	0	0	0
	G	new window	0.320	s	25.18	21.34	0	0	0	0	0	0	0	0
	D	11P0	0.290	s	22.82	7.58	0	0	0	0	0	0	0	0
	W	15B15-0wc-6	0.088	s	5.33	0.23	27	27	146	7	0	0	0	0
	G	BASEMENT WINDOWS	0.320	s	25.18	21.34	0	0	0	0	0	0	0	0
	W	12F-0sw	0.065	w	5.12	0.97	0	0	0	0	0	0	0	0
	G	new window	0.320	w	25.18	36.89	0	0	0	0	0	0	0	0
	W	15B15-0wc-6	0.088	w	5.33	0.22	0	0	0	0	27	27	146	7
	G	BASEMENT WINDOWS	0.320	w	25.18	36.89	0	0	0	0	0	0	0	0
	C	16B-50ad	0.020	-	1.57	0.99	0	0	0	0	0	0	0	0
	F	19A-0bswd	0.295	-	8.72	2.40	0	0	0	0	0	0	0	0
	F	21A-24t	0.025	-	1.97	0.00	56	56	110	0	221	221	435	0
6	c) AED excursion									-1				-2
	Envelope loss/gain								256	6			2328	648
12	a) Infiltration								28	8			305	84
	b) Room ventilation								0	0			0	0
13	Internal gains:				Occupants @	230	0			0	1			230
					Appliances/other					0				0
	Subtotal (lines 6 to 13)								283	13			2633	962
	Less external load								0	0			0	0
	Less transfer								0	0			0	0
	Redistribution								-283	-13			0	0
14	Subtotal								0	0			2633	962
15	Duct loads						-0%	0%	0	0	-0%	0%	0	0
	Total room load								0	0			2633	962
	Air required (cfm)								0	0			81	87

Calculations approved by ACCA to meet all requirements of Manual J 8th Ed.



Right-J® Worksheet

Entire House

CASTLE ROCK HOMES

Job: **PARK PLACE**
Date: **FEB,08,1019**
By: **ROBERT HALL**

1	Room name				BASE BATH				BED 2					
	Exposed wall				6.0 ft				12.0 ft					
	Room height				9.0 ft heat/cool				9.0 ft heat/cool					
3	Room dimensions				9.0 x 6.0 ft				13.0 x 12.0 ft					
5	Room area				54.0 ft²				156.0 ft²					
	Ty	Construction number	U-value (Btuh/ft²-°F)	Or	HTM (Btuh/ft²)		Area (ft²) or perimeter (ft)		Load (Btuh)		Area (ft²) or perimeter (ft)		Load (Btuh)	
					Heat	Cool	Gross	N/P/S	Heat	Cool	Gross	N/P/S	Heat	Cool
6	W	12F-0sw	0.065	n	5.12	0.97	0	0	0	0	0	0	0	0
	G	new window	0.320	n	25.18	13.02	0	0	0	0	0	0	0	0
	D	11P0	0.290	n	22.82	7.58	0	0	0	0	0	0	0	0
	W	15B15-0wc-6	0.088	n	5.39	0.25	0	0	0	0	0	0	0	0
11	W	12F-0sw	0.065	e	5.12	0.97	0	0	0	0	0	0	0	0
	G	new window	0.320	e	25.18	36.89	0	0	0	0	0	0	0	0
	W	15B15-0wc-6	0.088	e	5.26	0.19	54	54	291	14	108	92	471	13
	G	BASEMENT WINDOWS	0.320	e	25.18	36.89	0	0	0	0	16	0	403	590
	W	12F-0sw	0.065	s	5.12	0.97	0	0	0	0	0	0	0	0
	G	new window	0.320	s	25.18	21.34	0	0	0	0	0	0	0	0
	D	11P0	0.290	s	22.82	7.58	0	0	0	0	0	0	0	0
	W	15B15-0wc-6	0.088	s	5.33	0.23	0	0	0	0	0	0	0	0
	G	BASEMENT WINDOWS	0.320	s	25.18	21.34	0	0	0	0	0	0	0	0
	W	12F-0sw	0.065	w	5.12	0.97	0	0	0	0	0	0	0	0
	G	new window	0.320	w	25.18	36.89	0	0	0	0	0	0	0	0
	W	15B15-0wc-6	0.088	w	5.33	0.22	0	0	0	0	0	0	0	0
	G	BASEMENT WINDOWS	0.320	w	25.18	36.89	0	0	0	0	0	0	0	0
	C	16B-50ad	0.020	-	1.57	0.99	0	0	0	0	0	0	0	0
	F	19A-0bswd	0.295	-	8.72	2.40	0	0	0	0	0	0	0	0
	F	21A-24t	0.025	-	1.97	0.00	54	54	106	0	156	156	307	0
6	c) AED excursion									-2				22
	Envelope loss/gain								397	11			1181	625
12	a) Infiltration								56	15			111	31
	b) Room ventilation								0	0			0	0
13	Internal gains: Occupants @ 230						0			0	0			0
	Appliances/other									0				0
	Subtotal (lines 6 to 13)								453	27			1292	655
	Less external load								0	0			0	0
	Less transfer								0	0			0	0
	Redistribution								0	0			0	0
14	Subtotal								453	27			1292	655
15	Duct loads						-0%	0%	0	0	-0%	0%	0	0
	Total room load								453	27			1292	655
	Air required (cfm)								14	2			40	59

Calculations approved by ACCA to meet all requirements of Manual J 8th Ed.

Right-J® Worksheet

Entire House

CASTLE ROCK HOMES

Job: **PARK PLACE**
Date: **FEB,08,1019**
By: **ROBERT HALL**

1		Room name				BED 3				MASTER BED				
2		Exposed wall				48.0 ft				34.0 ft				
3		Room height				9.0 ft				9.0 ft				
4		Room dimensions				1.0 x 231.0 ft				17.0 x 14.0 ft				
5		Room area				231.0 ft²				238.0 ft²				
	Ty	Construction number	U-value (Btuh/ft²·°F)	Or	HTM (Btuh/ft²)		Area (ft²) or perimeter (ft)		Load (Btuh)		Area (ft²) or perimeter (ft)		Load (Btuh)	
					Heat	Cool	Gross	N/P/S	Heat	Cool	Gross	N/P/S	Heat	Cool
6	W	12F-0sw	0.065	n	5.12	0.97	0	0	0	0	153	128	655	124
	G	new window	0.320	n	25.18	13.02	0	0	0	0	25	0	630	325
	D	11P0	0.290	n	22.82	7.58	0	0	0	0	0	0	0	0
	W	15B15-0wc-6	0.088	n	5.39	0.25	0	0	0	0	0	0	0	0
11	W	12F-0sw	0.065	e	5.12	0.97	0	0	0	0	126	126	645	122
	G	new window	0.320	e	25.18	36.89	0	0	0	0	0	0	0	0
	W	15B15-0wc-6	0.088	e	5.26	0.19	99	99	534	25	0	0	0	0
	G	BASEMENT WINDOWS	0.320	e	25.18	36.89	0	0	0	0	0	0	0	0
	W	12F-0sw	0.065	s	5.12	0.97	0	0	0	0	0	0	0	0
	G	new window	0.320	s	25.18	21.34	0	0	0	0	0	0	0	0
	D	11P0	0.290	s	22.82	7.58	0	0	0	0	0	0	0	0
	W	15B15-0wc-6	0.088	s	5.33	0.23	189	173	908	33	0	0	0	0
	G	BASEMENT WINDOWS	0.320	s	25.18	21.34	16	0	403	341	0	0	0	0
	W	12F-0sw	0.065	w	5.12	0.97	0	0	0	0	27	27	138	26
	G	new window	0.320	w	25.18	36.89	0	0	0	0	0	0	0	0
	W	15B15-0wc-6	0.088	w	5.33	0.22	144	144	776	36	0	0	0	0
	G	BASEMENT WINDOWS	0.320	w	25.18	36.89	0	0	0	0	0	0	0	0
	C	16B-50ad	0.020	-	1.57	0.99	0	0	0	0	238	238	375	236
	F	19A-0bswd	0.295	-	8.72	2.40	0	0	0	0	0	0	0	0
	F	21A-24t	0.025	-	1.97	0.00	231	231	454	0	0	0	0	0
6	c) AED excursion									21				-118
	Envelope loss/gain								3076	456			2442	717
12	a) Infiltration								444	122			1132	312
	b) Room ventilation								0	0			0	0
13	Internal gains:		Occupants @	230		1				230	2			460
			Appliances/other							0				0
	Subtotal (lines 6 to 13)								3520	809			3574	1489
	Less external load								0	0			0	0
	Less transfer								0	0			0	0
	Redistribution								60	3			0	0
14	Subtotal								3579	811			3574	1489
15	Duct loads								-0%	0%			0	0
	Total room load								3579	811			3574	1489
	Air required (cfm)								110	73			110	134

Calculations approved by ACCA to meet all requirements of Manual J 8th Ed.



Right-J® Worksheet

Entire House

CASTLE ROCK HOMES

Job: **PARK PLACE**
Date: **FEB,08,1019**
By: **ROBERT HALL**

1	Room name				MASTER BATH 11.0 ft				MAIN BATH 5.0 ft					
2	Exposed wall				9.0 ft heat/cool				9.0 ft heat/cool					
3	Room height				13.0 x 11.0 ft				9.0 x 5.0 ft					
4	Room dimensions				143.0 ft²				45.0 ft²					
5	Room area													
	Ty	Construction number	U-value (Btuh/ft²-°F)	Or	HTM (Btuh/ft²)		Area (ft²) or perimeter (ft)		Load (Btuh)		Area (ft²) or perimeter (ft)		Load (Btuh)	
					Heat	Cool	Gross	N/P/S	Heat	Cool	Gross	N/P/S	Heat	Cool
6	W	12F-0sw	0.065	n	5.12	0.97	0	0	0	0	0	0	0	0
	G	new window	0.320	n	25.18	13.02	0	0	0	0	0	0	0	0
	D	11P0	0.290	n	22.82	7.58	0	0	0	0	0	0	0	0
	W	15B15-0wc-6	0.088	n	5.39	0.25	0	0	0	0	0	0	0	0
11	W	12F-0sw	0.065	e	5.12	0.97	99	83	425	81	45	41	210	40
	G	new window	0.320	e	25.18	36.89	16	0	403	590	4	0	101	148
	W	15B15-0wc-6	0.088	e	5.26	0.19	0	0	0	0	0	0	0	0
	G	BASEMENT WINDOWS	0.320	e	25.18	36.89	0	0	0	0	0	0	0	0
	W	12F-0sw	0.065	s	5.12	0.97	0	0	0	0	0	0	0	0
	G	new window	0.320	s	25.18	21.34	0	0	0	0	0	0	0	0
	D	11P0	0.290	s	22.82	7.58	0	0	0	0	0	0	0	0
	W	15B15-0wc-6	0.088	s	5.33	0.23	0	0	0	0	0	0	0	0
	G	BASEMENT WINDOWS	0.320	s	25.18	21.34	0	0	0	0	0	0	0	0
	W	12F-0sw	0.065	w	5.12	0.97	0	0	0	0	0	0	0	0
	G	new window	0.320	w	25.18	36.89	0	0	0	0	0	0	0	0
	W	15B15-0wc-6	0.088	w	5.33	0.22	0	0	0	0	0	0	0	0
	G	BASEMENT WINDOWS	0.320	w	25.18	36.89	0	0	0	0	0	0	0	0
	C	16B-50ad	0.020	-	1.57	0.99	143	143	225	142	45	45	71	45
	F	19A-0bswd	0.295	-	8.72	2.40	0	0	0	0	0	0	0	0
	F	21A-24t	0.025	-	1.97	0.00	0	0	0	0	0	0	0	0
6	c) AED excursion									1				-3
	Envelope loss/gain								1053	814			381	229
12	a) Infiltration								366	101			167	46
	b) Room ventilation								0	0			0	0
13	Internal gains:				Occupants @	230	0			0	0			0
					Appliances/other					0				0
	Subtotal (lines 6 to 13)								1419	915			548	275
	Less external load								0	0			0	0
	Less transfer								0	0			0	0
	Redistribution								0	0			0	0
14	Subtotal								1419	915			548	275
15	Duct loads						-0%	0%	0	0	-0%	0%	0	0
	Total room load								1419	915			548	275
	Air required (cfm)								44	82			17	25

Calculations approved by ACCA to meet all requirements of Manual J 8th Ed.



Right-J® Worksheet

Entire House

CASTLE ROCK HOMES

Job: **PARK PLACE**
Date: **FEB,08,1019**
By: **ROBERT HALL**

1 Room name				BED 5 WIC 15.0 ft heat/cool				BED 5 32.0 ft heat/cool						
2 Exposed wall				9.0 ft 8.0 x 7.0 ft				9.0 ft 1.0 x 180.0 ft						
3 Room height				56.0 ft²				180.0 ft²						
4 Room dimensions														
5 Room area														
	Ty	Construction number	U-value (Btuh/ft²·°F)	Or	HTM (Btuh/ft²)		Area (ft²) or perimeter (ft)		Load (Btuh)		Area (ft²) or perimeter (ft)		Load (Btuh)	
					Heat	Cool	Gross	N/P/S	Heat	Cool	Gross	N/P/S	Heat	Cool
6	W	12F-0sw	0.065	n	5.12	0.97	0	0	0	0	0	0	0	0
	G	new window	0.320	n	25.18	13.02	0	0	0	0	0	0	0	0
	D	11P0	0.290	n	22.82	7.58	0	0	0	0	0	0	0	0
	W	15B15-0wc-6	0.088	n	5.39	0.25	0	0	0	0	0	0	0	0
11	W	12F-0sw	0.065	e	5.12	0.97	63	63	322	61	45	45	230	44
	G	new window	0.320	e	25.18	36.89	0	0	0	0	0	0	0	0
	W	15B15-0wc-6	0.088	e	5.26	0.19	0	0	0	0	0	0	0	0
	G	BASEMENT WINDOWS	0.320	e	25.18	36.89	0	0	0	0	0	0	0	0
	W	12F-0sw	0.065	s	5.12	0.97	72	64	327	62	117	92	471	89
	G	new window	0.320	s	25.18	21.34	8	0	201	171	25	0	630	534
	D	11P0	0.290	s	22.82	7.58	0	0	0	0	0	0	0	0
	W	15B15-0wc-6	0.088	s	5.33	0.23	0	0	0	0	0	0	0	0
	G	BASEMENT WINDOWS	0.320	s	25.18	21.34	0	0	0	0	0	0	0	0
	W	12F-0sw	0.065	w	5.12	0.97	0	0	0	0	126	126	645	122
	G	new window	0.320	w	25.18	36.89	0	0	0	0	0	0	0	0
	W	15B15-0wc-6	0.088	w	5.33	0.22	0	0	0	0	0	0	0	0
	G	BASEMENT WINDOWS	0.320	w	25.18	36.89	0	0	0	0	0	0	0	0
	C	16B-50ad	0.020	-	1.57	0.99	56	56	88	56	180	180	283	179
	F	19A-0bswd	0.295	-	8.72	2.40	0	0	0	0	0	0	0	0
	F	21A-24t	0.025	-	1.97	0.00	0	0	0	0	0	0	0	0
6	c) AED excursion									4			14	
	Envelope loss/gain								939	353			2258	981
12	a) Infiltration								500	138			1066	294
	b) Room ventilation								0	0			0	0
13	Internal gains:		Occupants @	230			0			0	1		230	0
			Appliances/other							0			0	0
	Subtotal (lines 6 to 13)								1439	491			3324	1505
	Less external load								0	0			0	0
	Less transfer								0	0			0	0
	Redistribution								0	0			0	0
14	Subtotal								1439	491			3324	1505
15	Duct loads								-0%	0%			0	0
	Total room load								1439	491			3324	1505
	Air required (cfm)								44	44			103	136

Calculations approved by ACCA to meet all requirements of Manual J 8th Ed.



Right-J® Worksheet

Entire House

CASTLE ROCK HOMES

Job: **PARK PLACE**
Date: **FEB,08,1019**
By: **ROBERT HALL**

1	Room name				LAUNDRY				PANTRY					
	Exposed wall				10.0 ft				20.0 ft					
	Room height				9.0 ft				9.0 ft					
3	Room dimensions				10.0 x 8.0 ft				12.0 x 8.0 ft					
5	Room area				80.0 ft²				96.0 ft²					
	Ty	Construction number	U-value (Btuh/ft²·°F)	Or	HTM (Btuh/ft²)		Area (ft²) or perimeter (ft)		Load (Btuh)		Area (ft²) or perimeter (ft)		Load (Btuh)	
					Heat	Cool	Gross	N/P/S	Heat	Cool	Gross	N/P/S	Heat	Cool
6	W	12F-0sw	0.065	n	5.12	0.97	0	0	0	0	0	0	0	0
	G	new window	0.320	n	25.18	13.02	0	0	0	0	0	0	0	0
	D	11P0	0.290	n	22.82	7.58	0	0	0	0	0	0	0	0
	W	15B15-0wc-6	0.088	n	5.39	0.25	0	0	0	0	0	0	0	0
11	W	12F-0sw	0.065	e	5.12	0.97	0	0	0	0	0	0	0	0
	G	new window	0.320	e	25.18	36.89	0	0	0	0	0	0	0	0
	W	15B15-0wc-6	0.088	e	5.26	0.19	0	0	0	0	0	0	0	0
	G	BASEMENT WINDOWS	0.320	e	25.18	36.89	0	0	0	0	0	0	0	0
	W	12F-0sw	0.065	s	5.12	0.97	90	69	353	67	108	108	552	105
	G	new window	0.320	s	25.18	21.34	0	0	0	0	0	0	0	0
	D	11P0	0.290	s	22.82	7.58	21	21	479	159	0	0	0	0
	W	15B15-0wc-6	0.088	s	5.33	0.23	0	0	0	0	0	0	0	0
	G	BASEMENT WINDOWS	0.320	s	25.18	21.34	0	0	0	0	0	0	0	0
	W	12F-0sw	0.065	w	5.12	0.97	0	0	0	0	72	72	368	70
	G	new window	0.320	w	25.18	36.89	0	0	0	0	0	0	0	0
	W	15B15-0wc-6	0.088	w	5.33	0.22	0	0	0	0	0	0	0	0
	G	BASEMENT WINDOWS	0.320	w	25.18	36.89	0	0	0	0	0	0	0	0
	C	16B-50ad	0.020	-	1.57	0.99	80	80	126	79	96	96	151	95
	F	19A-0bswd	0.295	-	8.72	2.40	10	10	87	24	24	24	209	58
	F	21A-24t	0.025	-	1.97	0.00	0	0	0	0	0	0	0	0
6	c) AED excursion													-38
	Envelope loss/gain								1045	299			1281	290
12	a) Infiltration								333	92			666	184
	b) Room ventilation								0	0			0	0
13	Internal gains: Occupants @ 230						0			0	0			0
	Appliances/other									0				0
	Subtotal (lines 6 to 13)								1378	391			1947	474
	Less external load								0	0			0	0
	Less transfer								0	0			0	0
	Redistribution								779	190			-1947	-474
14	Subtotal								2157	580			0	0
15	Duct loads						-0%	0%	0	0	-0%	0%	0	0
	Total room load								2157	580			0	0
	Air required (cfm)								67	52			0	0

Calculations approved by ACCA to meet all requirements of Manual J 8th Ed.



Right-J® Worksheet
Entire House
CASTLE ROCK HOMES

Job: PARK PLACE
Date: FEB,08,1019
By: ROBERT HALL

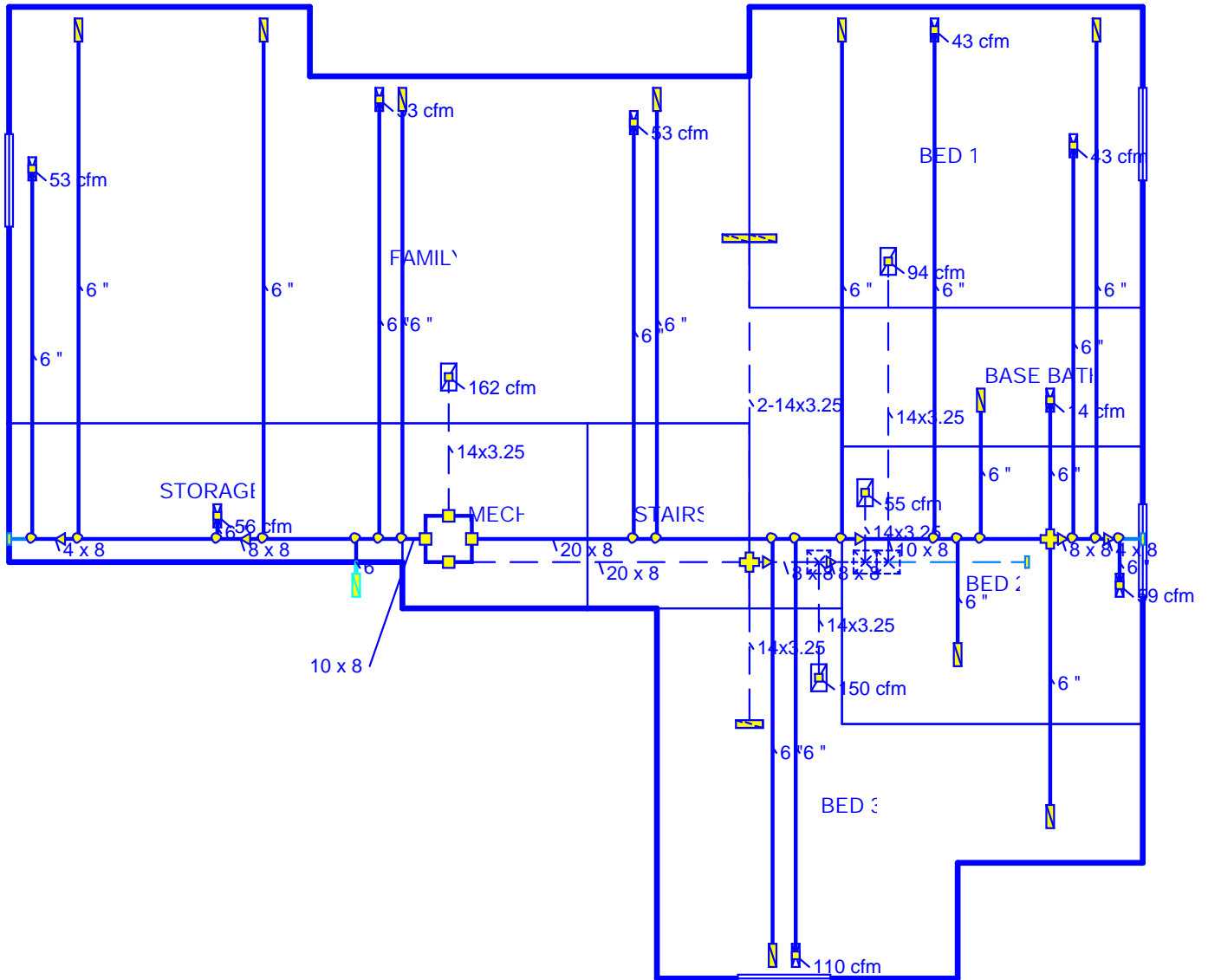
1		Room name			KIT/LIV/ENTRY									
2		Exposed wall			61.0 ft									
3		Room height			9.0 ft				heat/cool					
4		Room dimensions			1.0 x 687.0 ft									
5		Room area			687.0 ft²									
	Ty	Construction number	U-value (Btuh/ft²·°F)	Or	HTM (Btuh/ft²)		Area (ft²) or perimeter (ft)		Load (Btuh)		Area or perimeter		Load	
					Heat	Cool	Gross	N/P/S	Heat	Cool	Gross	N/P/S	Heat	Cool
6	W	12F-0sw	0.065	n	5.12	0.97	288	207	1059	201				
	G	new window	0.320	n	25.18	13.02	60	0	1511	781				
	D	11P0	0.290	n	22.82	7.58	21	21	479	159				
	W	15B15-0wc-6	0.088	n	5.39	0.25	0	0	0	0				
11	W	12F-0sw	0.065	e	5.12	0.97	27	27	138	26				
	G	new window	0.320	e	25.18	36.89	0	0	0	0				
	W	15B15-0wc-6	0.088	e	5.26	0.19	0	0	0	0				
	G	BASEMENT WINDOWS	0.320	e	25.18	36.89	0	0	0	0				
	W	12F-0sw	0.065	s	5.12	0.97	54	33	169	32				
	G	new window	0.320	s	25.18	21.34	0	0	0	0				
	D	11P0	0.290	s	22.82	7.58	21	21	479	159				
	W	15B15-0wc-6	0.088	s	5.33	0.23	0	0	0	0				
	G	BASEMENT WINDOWS	0.320	s	25.18	21.34	0	0	0	0				
	W	12F-0sw	0.065	w	5.12	0.97	180	160	818	155				
	G	new window	0.320	w	25.18	36.89	20	0	504	738				
	W	15B15-0wc-6	0.088	w	5.33	0.22	0	0	0	0				
	G	BASEMENT WINDOWS	0.320	w	25.18	36.89	0	0	0	0				
	C	16B-50ad	0.020	-	1.57	0.99	687	687	1081	682				
	F	19A-0bswd	0.295	-	8.72	2.40	12	12	105	29				
	F	21A-24t	0.025	-	1.97	0.00	0	0	0	0				
6	c) AED excursion									-60				
	Envelope loss/gain								6344	2903				
12	a) Infiltration								2031	560				
	b) Room ventilation								0	0				
13	Internal gains:			Occupants @	230		0			0				
				Appliances/other						0				
	Subtotal (lines 6 to 13)								8375	3463				
	Less external load								0	0				
	Less transfer								0	0				
	Redistribution								1168	284				
14	Subtotal								9543	3748				
15	Duct loads						-0%	0%	0	0				
	Total room load								9543	3748				
	Air required (cfm)								294	338				

Calculations approved by ACCA to meet all requirements of Manual J 8th Ed.





Basement



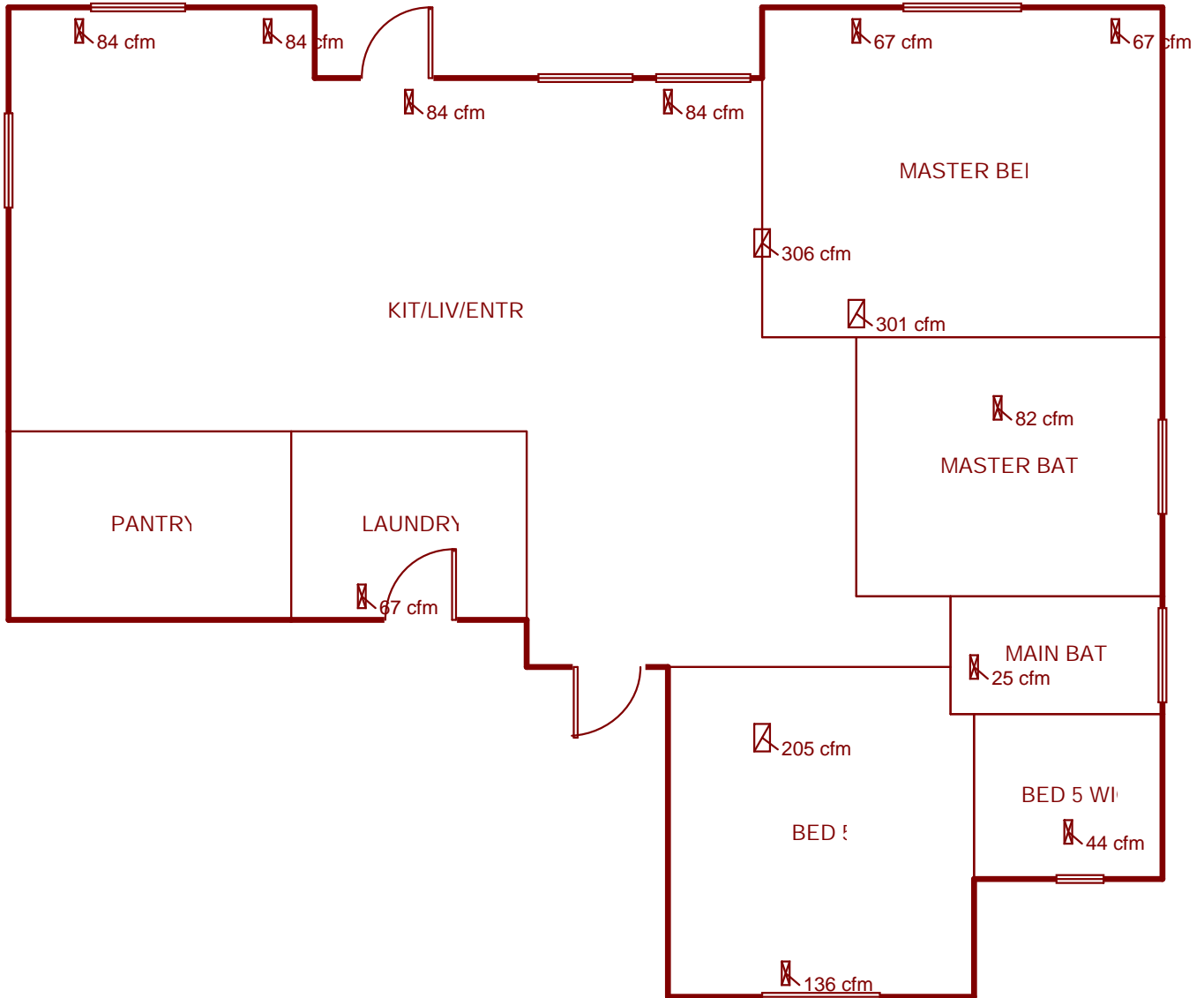
Job #: PARK PLACE
Performed by ROBERT HALL for:
PARK PLACE LOT 5 BLOCK 7

CASTLE ROCK HOMES

Scale: 1 : 86
Page 1
Right-Suite® Universal 2017
17.0.21 RSU06972
2019-Feb-25 11:49:46
...CASTLE ROCK PARK PLACE 1459...



First Floor



Job #: PARK PLACE
Performed by ROBERT HALL for:
PARK PLACE LOT 5 BLOCK 7

CASTLE ROCK HOMES

Scale: 1 : 86
Page 2
Right-Suite® Universal 2017
17.0.21 RSU06972
2019-Feb-25 11:49:46
...CASTLE ROCK PARK PLACE 1459...

Duct System Summary

Entire House
 CASTLE ROCK HOMES

Job: PARK PLACE
 Date: FEB,08,1019
 By: ROBERT HALL

Project Information

For: PARK PLACE LOT 5 BLOCK 7

	Heating	Cooling
External static pressure	0.70 in H2O	0.70 in H2O
Pressure losses	0.33 in H2O	0.33 in H2O
Available static pressure	0.37 in H2O	0.37 in H2O
Supply / return available pressure	0.222 / 0.148 in H2O	0.222 / 0.148 in H2O
Lowest friction rate	0.104 in/100ft	0.104 in/100ft
Actual air flow	1140 cfm	1140 cfm
Total effective length (TEL)		355 ft

Supply Branch Detail Table

Name	Design (Btuh)	Htg (cfm)	Clg (cfm)	Design FR	Diam (in)	H x W (in)	Duct Matl	Actual Ln (ft)	Ftg.Eqv Ln (ft)	Trunk
BASE BATH	h 453	14	2	0.169	6.0	0x0	ShMt	31.0	100.0	st1A
BED 1	c 481	41	43	0.104	6.0	0x0	ShMt	43.0	170.0	st1B
BED 1-A	c 481	41	43	0.137	6.0	0x0	ShMt	42.0	120.0	st1A
BED 2	c 655	40	59	0.111	6.0	0x0	ShMt	30.0	170.0	st1C
BED 3	h 3579	110	73	0.168	6.0	0x0	ShMt	32.0	100.0	st1
BED 5	c 1505	103	136	0.163	6.0	0x0	ShMt	31.0	105.0	st1
BED 5 WIC	h 1439	44	44	0.162	6.0	0x0	ShMt	37.0	100.0	st1A
FAMILY	h 1717	53	32	0.155	6.0	0x0	ShMt	33.0	110.0	st2B
FAMILY-A	h 1717	53	32	0.159	6.0	0x0	ShMt	25.0	115.0	st1
FAMILY-B	h 1717	53	32	0.176	6.0	0x0	ShMt	21.0	105.0	st2
KIT/LIV/ENTRY	c 937	74	84	0.162	6.0	0x0	ShMt	37.0	100.0	st2A
KIT/LIV/ENTRY-B	c 937	74	84	0.187	6.0	0x0	ShMt	29.0	90.0	st2
KIT/LIV/ENTRY-C	c 937	74	84	0.171	6.0	0x0	ShMt	20.0	110.0	st2
KIT/LIV/ENTRY-D	c 937	74	84	0.162	6.0	0x0	ShMt	27.0	110.0	st1
LAUNDRY	h 2157	67	52	0.211	6.0	0x0	ShMt	5.0	100.0	st2
MAIN BATH	c 275	17	25	0.157	6.0	0x0	ShMt	26.0	115.0	st1A
MASTER BATH	c 915	44	82	0.161	6.0	0x0	ShMt	28.0	110.0	st1A
MASTER BED	c 744	55	67	0.173	6.0	0x0	ShMt	38.0	90.0	st1
MASTER BED-A	c 744	55	67	0.106	6.0	0x0	ShMt	49.0	160.0	st1B
STORAGE	h 1831	56	11	0.185	6.0	0x0	ShMt	10.0	110.0	st2A

Bold/italic values have been manually overridden

Supply Trunk Detail Table

Name	Trunk Type	Htg (cfm)	Clg (cfm)	Design FR	Veloc (fpm)	Diam (in)	H x W (in)	Duct Material	Trunk
st1	Peak AVF	690	759	0.104	683	12.3	8 x 20	ShtMetl	
st1A	Peak AVF	295	367	0.104	660	9.4	8 x 10	ShtMetl	st1
st2	Peak AVF	450	381	0.155	810	9.3	8 x 10	ShtMetl	
st2A	Peak AVF	183	128	0.155	412	6.7	8 x 8	ShtMetl	st2
st2B	Peak AVF	53	32	0.155	238	4.2	8 x 4	ShtMetl	st2A
st1B	Peak AVF	136	169	0.104	381	7.0	8 x 8	ShtMetl	st1A
st1C	Peak AVF	40	59	0.111	266	4.7	8 x 4	ShtMetl	st1B

Return Branch Detail Table

Name	Grille Size (in)	Htg (cfm)	Clg (cfm)	TEL (ft)	Design FR	Veloc (fpm)	Diam (in)	H x W (in)	Stud/Joist Opening (in)	Duct Matl	Trunk
rb6	0x0	287	306	67.0	0.221	483	7.5	2-3.25x14	2-10x18	SJSp	rt1
rb7	0x0	164	205	60.0	0.247	648	6.3	3.25x14	10x9	SJSp	rt1
rb1	0x0	162	75	36.0	0.411	514	5.3	3.25x14	10x9	SJSp	
rb4	0x0	150	132	101.0	0.147	476	6.3	3.25x14	10x9	SJSp	rt1A
rb2	0x0	55	46	131.0	0.113	173	4.5	3.25x14	10x9	SJSp	rt1B
rb3	0x0	94	76	142.0	0.104	296	5.6	3.25x14	10x9	SJSp	rt1B
rb5	0x0	228	301	0	0	953	0	3.25x14	10x9	SJSp	

Return Trunk Detail Table

Name	Trunk Type	Htg (cfm)	Clg (cfm)	Design FR	Veloc (fpm)	Diam (in)	H x W (in)	Duct Material	Trunk
rt1	Peak AVF	750	764	0.104	687	12.3	8 x 20	ShtMetl	
rt1A	Peak AVF	299	253	0.104	672	8.7	8 x 8	ShtMetl	rt1
rt1B	Peak AVF	148	121	0.104	333	6.7	8 x 8	ShtMetl	rt1A