

GENERAL STRUCTURAL NOTES

A. CODES AND SPECIFICATIONS

1. International Building Code (IBC) - 2012 Edition
2. ACI 318-11 Building Code Requirements for Reinforced Concrete
3. ANSI/APA National Design Specification (NDS) & Suppl. for Wood Const. - 2012 Edition
4. ASCE 7-10 Min. Design Loads for Buildings and other Structures.

B. DESIGN LOADS UNIFORM (PSF)

1. Floor Loads

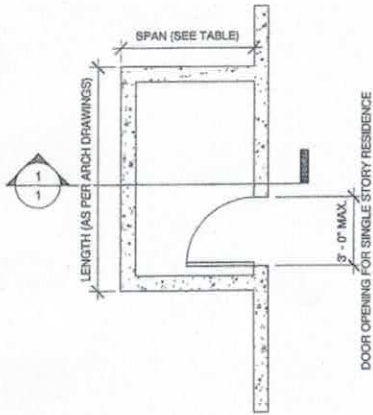
a. Deck Live = *Uniform*  
100

C. MATERIALS

1. Dimensional Lumber #2 Douglas Fir  
4000 PSI
2. Concrete f<sub>c</sub> Slab  
ASTM A515 - Grade 60
3. Reinforcing Steel A36 / F1554 GRADE 36
4. Anchor Bolts

4" CONCRETE DECK TABLE			
SPAN	JOIST SIZE	JOIST SPACING	SDS 1/4 x 3 1/2 SCREW SPACING
6' - 0"	2x6	16" O.C.	5" O.C.
6' - 0"	2x6	16" O.C.	

3" CONCRETE DECK TABLE			
SPAN	JOIST SIZE	JOIST SPACING	JOIST SPACING
4' - 0"	2x4	16" O.C.	7" O.C.
5' - 0"	2x6	16" O.C.	4 1/2" O.C.
6' - 0"	2x6	12" O.C.	3" O.C.

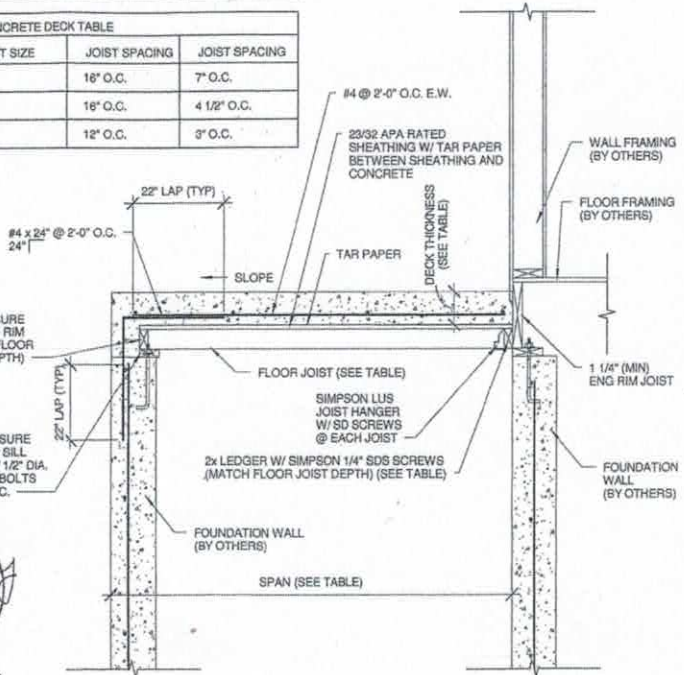


FLOOR PLAN

1/4" = 1'-0"



11-19-2013



1 SECTION  
1 DO NOT SCALE

COPYRIGHT © TETON STRUCTURAL ENGINEERS P.C. 2013  
138 SOUTH STATE STREET  
SHELLEY, IDAHO 83274  
PHONE (208) 357-8430  
FAX (208) 357-5418

TETON  
STRUCTURAL ENGINEERS P.C.

CHECKED BY: MDG  
PROJECT #213299  
11/19/13  
SHT: 1  
OF ONE

GENERIC  
COLD STORAGE