

GENERAL STRUCTURAL NOTES

A. CODES AND SPECIFICATIONS

1. International Building Code (IBC) - 2012 Edition
2. ACI 318-11 Building Code Requirements for Reinforced Concrete
3. ANSI/AF&PA National Design Specification (NDS) & Suppl. for Wood Const. - 2012 Edition
4. ASCE 7-10 Min. Design Loads for Buildings and other Structures.

B. DESIGN LOADS UNIFORM (PSF)

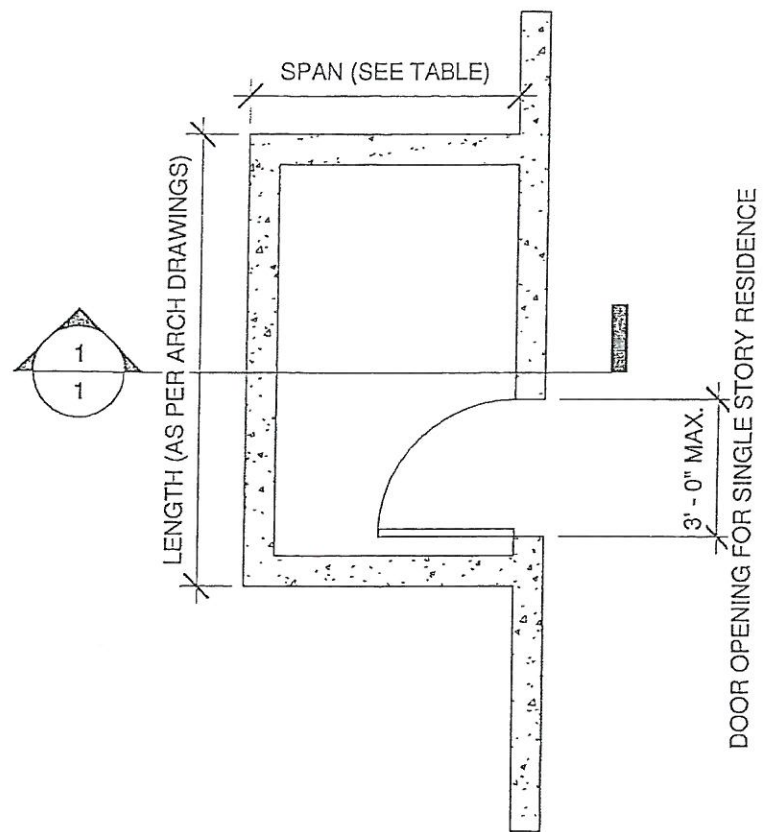
1. Floor Loads
  - a. Deck Live =  $\frac{\text{Uniform}}{100}$

C. MATERIALS

1. Dimensional Lumber #2 Douglas Fir
2. Concrete f'c Slab 4000 PSI
3. Reinforcing Steel ASTM A615 - Grade 60
4. Anchor Bolts A36 / F1554 GRADE 36

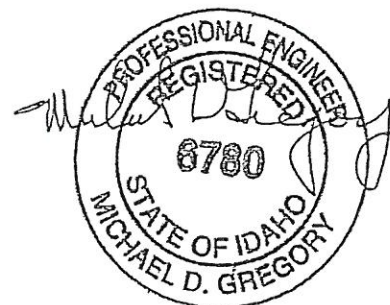
#4" CONCRETE DECK TABLE			
SPAN	JOIST SIZE	JOIST SPACING	SDS 1/4 x 3 1/2 SCREW SPACING
4' - 0"	2x4	16" O.C.	8" O.C.
6' - 0"	2x6	16" O.C.	5" O.C.
8' - 0"	2x8	16" O.C.	4" O.C.

6" CONCRETE DECK TABLE			
SPAN	JOIST SIZE	JOIST SPACING	JOIST SPACING
4' - 0"	2x4	16" O.C.	7" O.C.
6' - 0"	2x6	16" O.C.	4 1/2" O.C.
8' - 0"	2x8	12" O.C.	3" O.C.

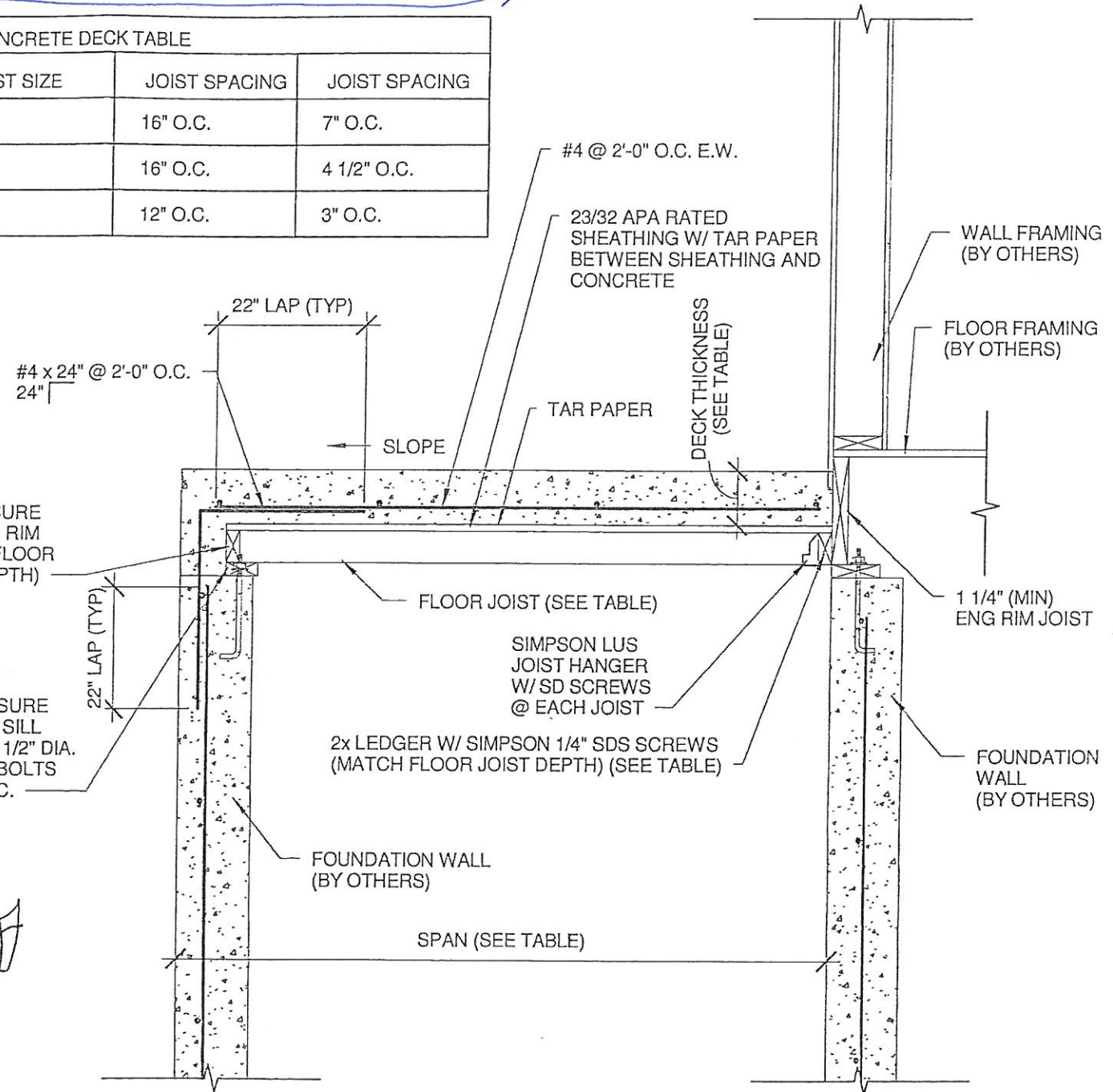


FLOOR PLAN

1/4" = 1'-0"



11-19-2013



1 SECTION  
1 DO NOT SCALE

COPYRIGHT © TETON STRUCTURAL ENGINEERS P.C. 2013  
 THIS DRAWING IS THE PROPERTY OF TETON STRUCTURAL ENGINEERS, P.C. IT IS NOT TO BE REPRODUCED OR TO BE USED FOR ANY CONSTRUCTION EXCEPT AS HEREIN INDICATED WITHOUT THE EXPRESS WRITTEN CONSENT OF TETON STRUCTURAL ENGINEERS, P.C.

136 SOUTH STATE STREET  
 SHELLEY, IDAHO 83274  
 PHONE (208)-357-2420  
 FAX (208)-357-2419

TETON  
 STRUCTURAL ENGINEERS P.C.

CHECKED BY: MDG  
 PROJECT #: 213299  
 11/19/13  
 SHT: 1  
 OF ONE

GENERIC  
 COLD STORAGE